

Ward Charcoal Ovens State Park

North

0 ft 1000 ft

TRAIL USE

- Hiking
- Bicycles
- Equestrians
- Dogs on Leash
- ATV's/Motorcycles***
*On Ward Legacy Trail Only

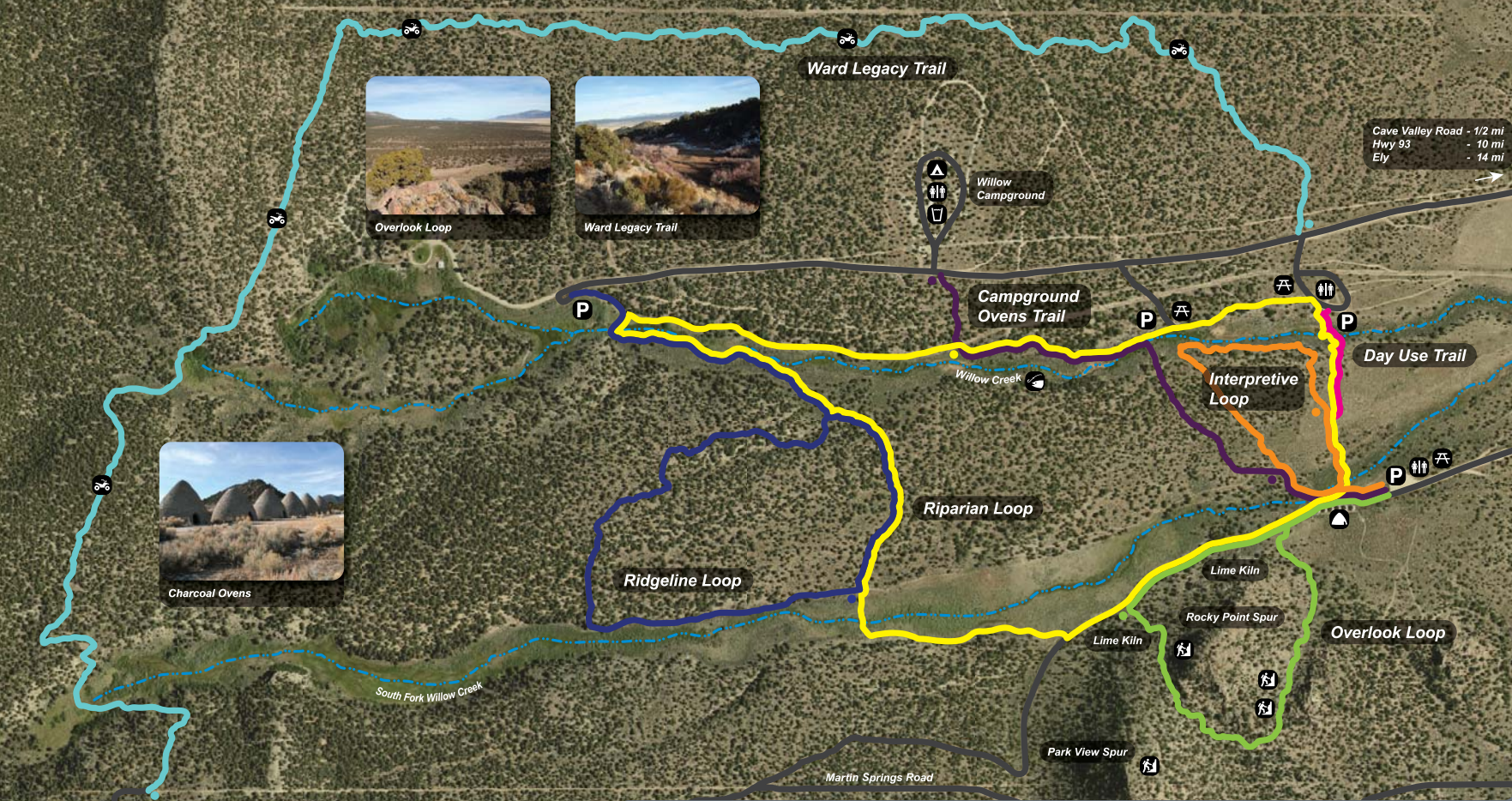
LEGEND

- Parking
- Fishing
- Restroom
- Picnic Area
- Campground
- Scramble Area
- Drinking Water
- Charcoal Ovens
- Gravel/Dirt Road
- Secondary Trail



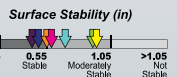
Funded by the Nevada Recreational Trails Program

Signage by Beneficial Designs Inc.
www.beneficialdesigns.com
Nevada Office: 775.768.8922
Designing beyond the norm to meet the needs of all people.



Cave Valley Road - 1/2 mi
Hwy 93 - 10 mi
Ely - 14 mi

Trail Name	Length	Typical Grade	Maximum Grade Standard Rang is 8-13%		Typical Cross Slope	Maximum Cross Slope		Typical Tread Width	Minimum Clearance Width	Surface Type	Surface Firmness		Surface Stability	
			Typical	Worst		Typical	Worst				Typical	Worst	Typical	Worst
Day Use Trail	0.1 mi	→ 7.7%	91 ft	16% - 27%	2.8%	118 ft	6% - 8%	18 in	14 in	Soil	0.17	0.17	0.55	0.58
Interpretive Loop	0.6 mi	↻ 4.4%	75 ft	16% - 22%	2.8%	71 ft	9% - 13%	25 in	15 in	Soil	0.17	0.17	0.47	0.55
Riparian Loop	2.0 mi	↻ 5.4%	89 ft	21% - 30%	5.4%	196 ft	16% - 22%	20 in	14 in	Soil	0.18	0.21	0.57	0.94
Overlook Loop	0.9 mi	↻ 10.1%	315 ft	26% - 36%	4.3%	65 ft	16% - 29%	19 in	14 in	Soil	0.18	0.19	0.76	0.92
Ward Legacy Trail	2.2 mi	↻ 10.3%	278 ft	31% - 36%	4.5%	281 ft	13% - 25%	60 in	60 in	Soil	0.17	0.17	0.41	0.69
Ridgeline Loop	1.6 mi	↻ 6.8%	254 ft	21% - 31%	4.9%	363 ft	13% - 16%	18 in	14 in	Soil	0.17	0.17	0.46	0.50
Campground Ovens Trail	0.6 mi	→ 5.1%	227 ft	9% - 17%	4.2%	204 ft	9% - 17%	23 in	14 in	Soil	0.17	0.17	0.44	0.46



WARNING: Trail conditions may have changed since January 2012 when these trails were assessed. Signage created by Beneficial Designs Inc. using trail data collected by a certified trail assessment coordinator.